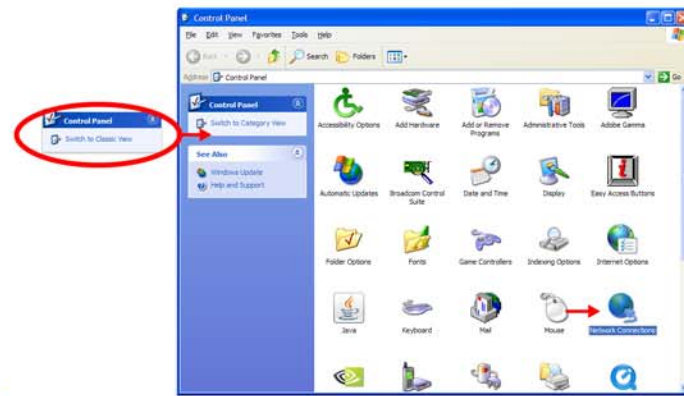




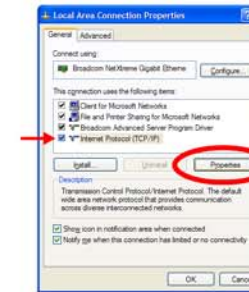
1 Click **Start** then **Control Panel**



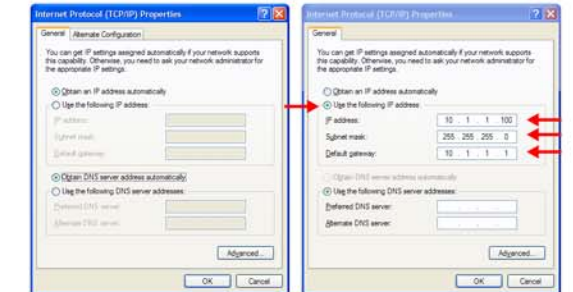
2 Double-Click **Network Connections**
(You may need to click "Classic View" to view these icons)



3 Click once on the **Local Area Connection** to highlight it. Then Right-Click and click **Properties** in the menu.



4 Click **Internet Protocol (TCP/IP)** and then click the **Properties** button.



5 When using an existing network, please contact the IT staff for the IP, Gateway and DNS information.

Otherwise, use the following:

Server IPs: 10.1.1.1 - 10.1.1.99
Subnet Mask: 255.255.255.0
Default Gateway: 10.1.1.1

Client IPs: 10.1.1.100 - 10.1.1.999
Subnet Mask: 255.255.255.0
Default Gateway: 10.1.1.1

Leave DNS entries blank.

