



## **SECTION 19 - TROUBLESHOOTING**

### ***Troubleshooting Flowcharts***

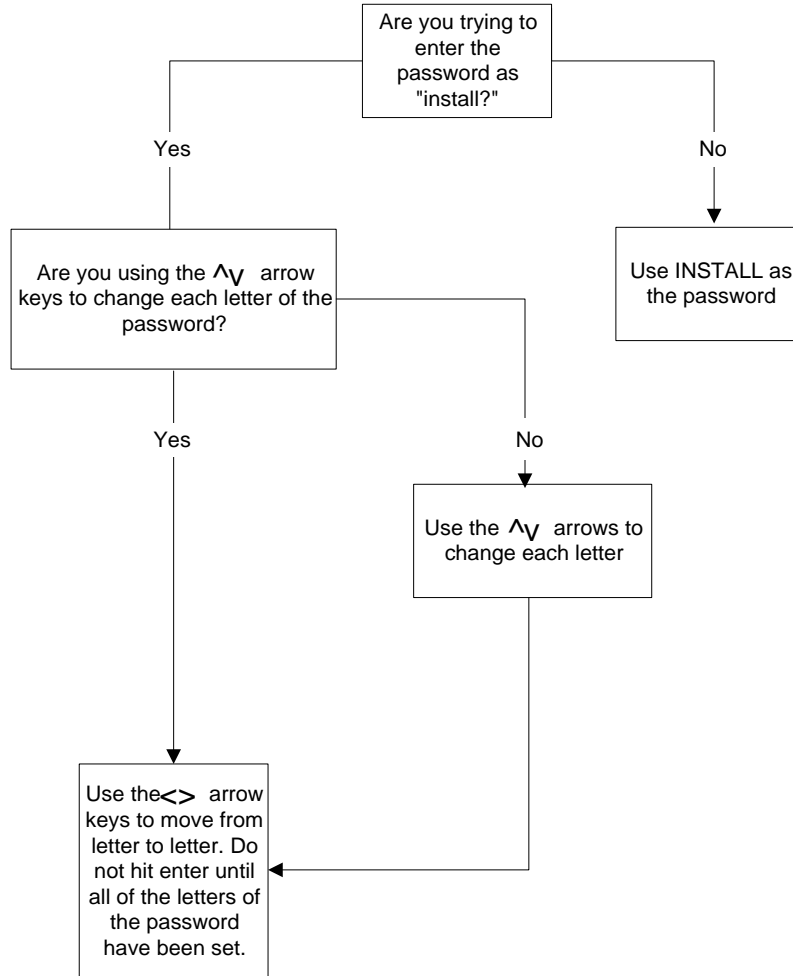
CCU Will Not Take Password	Page 19-2
Auto Setup Failed	Page 19-3
CEN DL CG Relays Not Energized	Page 19-4
Car Will Not Move On Inspection	Page 19-5
HPU Not Operational	Page 19-6

### ***CCU Display Sub-menu Reference Charts***

Car Commands	Page 19-7
Car Hoistway	Page 19-8
Car Parameters	Page 19-9
Car Status	Page 19-10
Car I/Os	Page 19-11
Car Control	Page 19-12
Group	Page 19-13

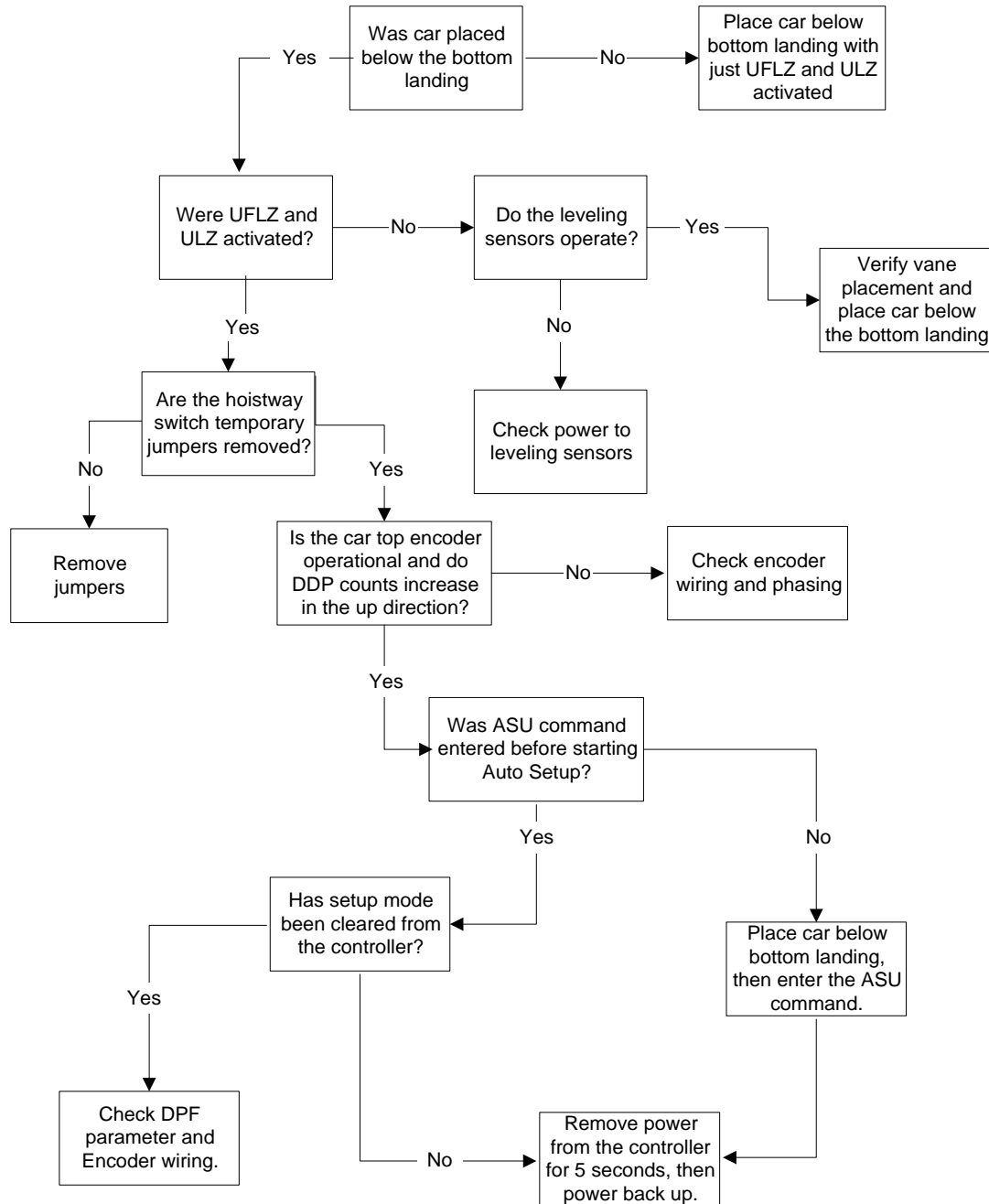


## CCU will not take password



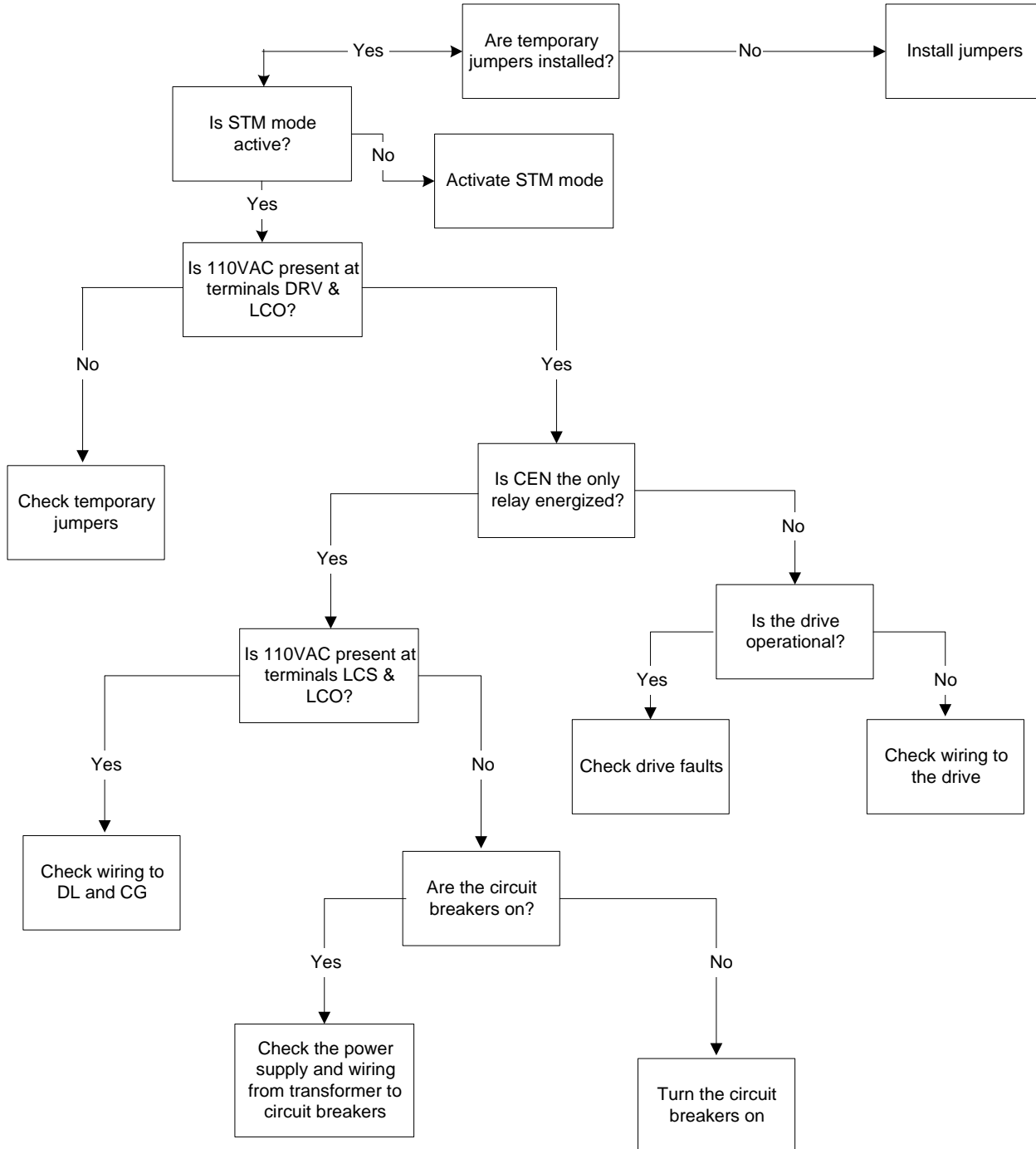


## Auto Setup Failed



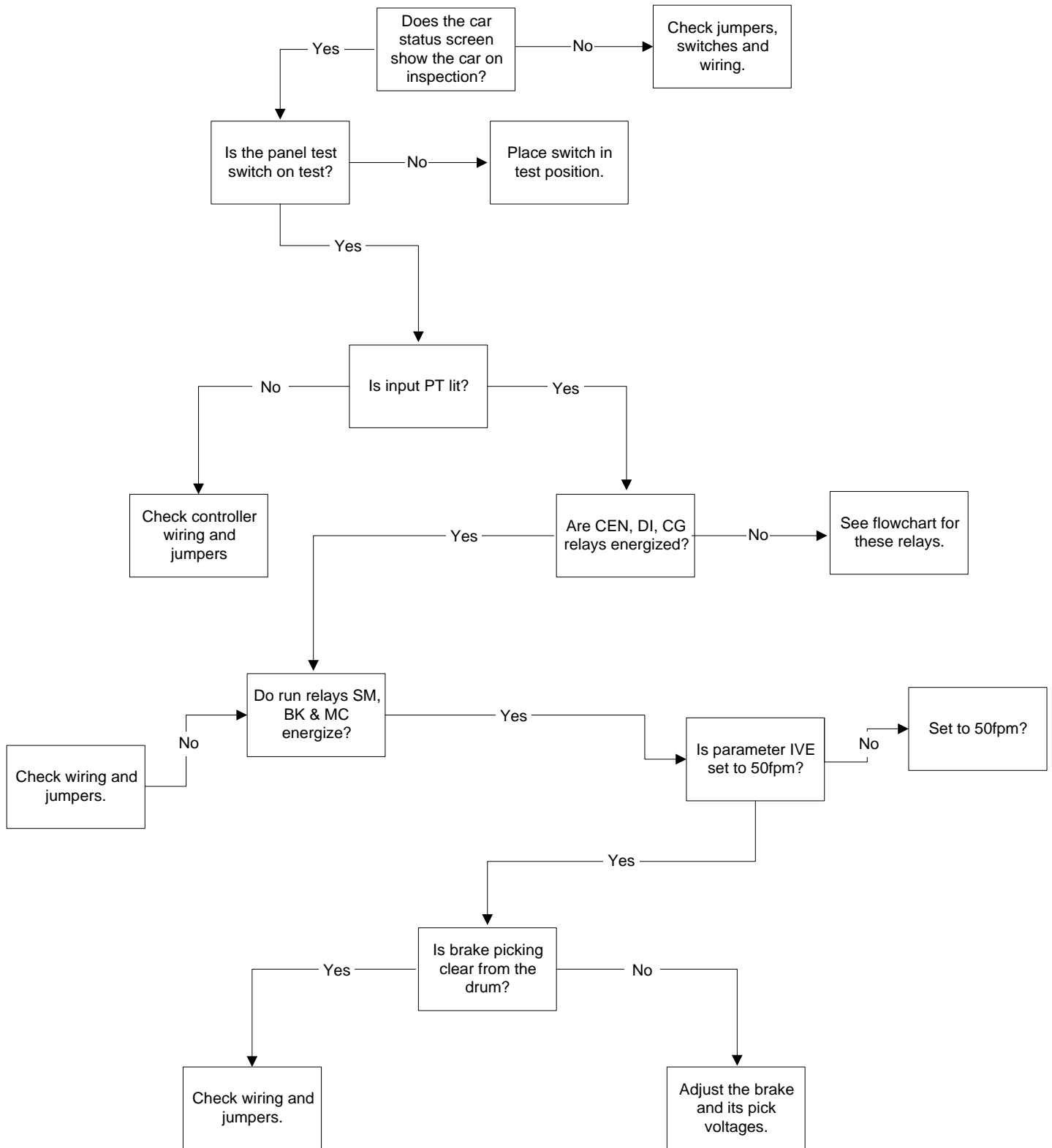


### CEN DL CG relays not energized



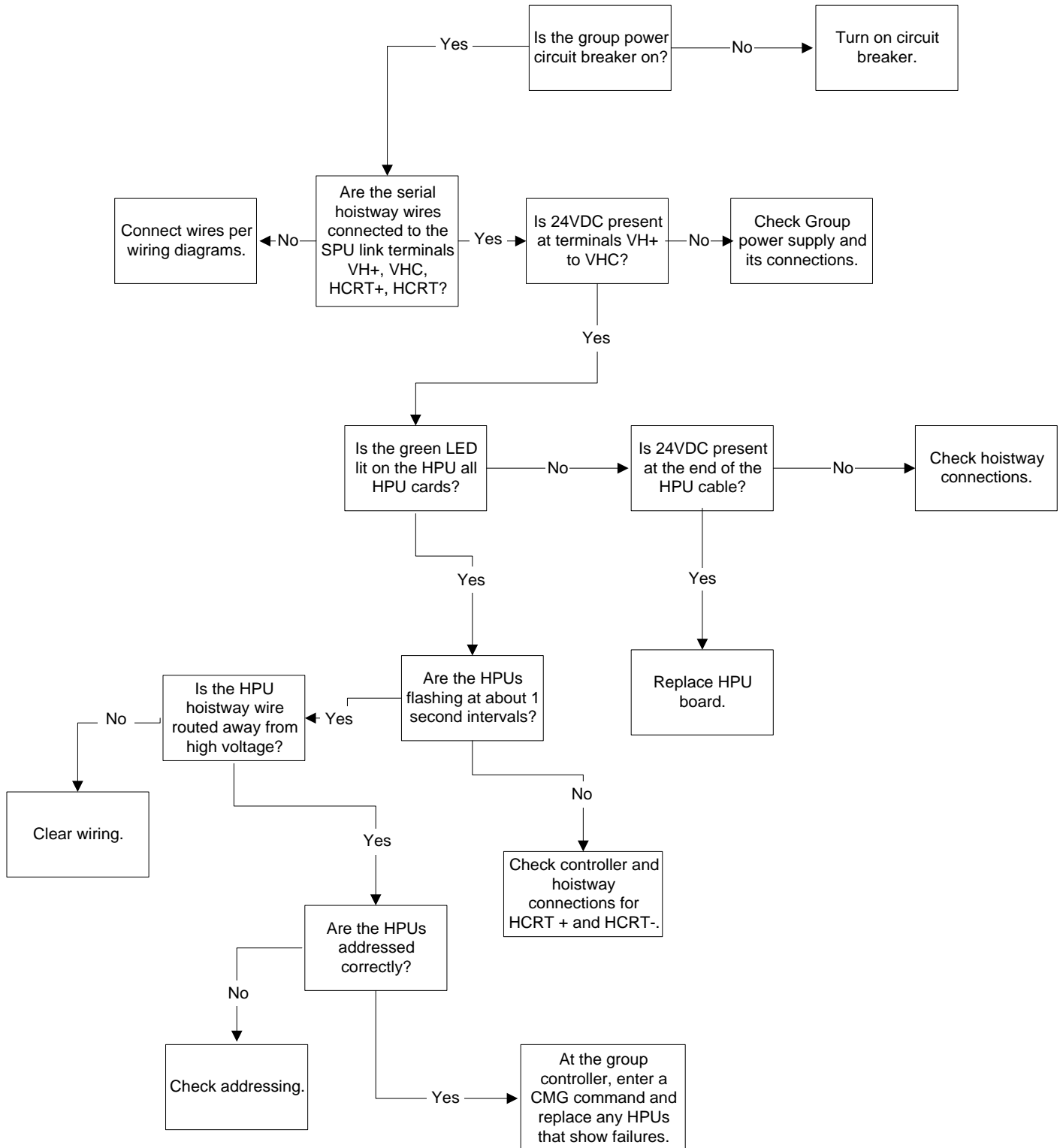


### Car will not move on inspection.





## HPU not operational





## CCU Display Sub-menu Reference Charts

Car Commands: Each Command is activated when selected.




```
>Car Commands
Car Hoistway
Car Parameters
Car Status
```

Enter 

```
>ASU      BAS
BBT      BDC
BIT      CCT
CMC      CMG
```



ASU	BAS
BBT	BDC
BIT	CCT
CMC	CMG
CPY	DAT
DPC	DPCT
EPI	EXI
FDR	FLT
FPR	FPU
GET	LWC
LWR	LWU
LWU1	LWU2
LWU3	LWU4
POS	RCC
RCM	RDE
RFL	RMA
RSL	SCC
SDS	SEF
SFL	SPD
SRC	STD
STS	STU
VEL	VER
WRT	

**Note:** Press  to move cursor left and right.  
Press  to move cursor up and down.  
Press  to select.



**Car Hoistway: Data is displayed at each selection.**




```
Car Commands
>Car Hoistway
Car Parameters
Car Status
```

Enter ←

```
>CDL  CDH  COT
DLB  DLR  EDB
EDR  ESB  ESV
ETB  ETV  EUB
```

└──┬──┘

```
CDL  CDH  COT
DLB  DLR  EDB
EDR  ESB  ESV
ETB  ETV  EUB
EUR  FCP  FOF
TDB  TSV  TUB
ULB  ULR
```

**Note:** Press  to move cursor left and right.  
Press  to move cursor up and down.  
Press  to select.





Car Status: Data is displayed at each selection.

```

Car Commands
Car Hoistway
Car Parameters
>Car Status
  
```



```

AUT Pos 4 0
VEL 0 0 0
DPP 1000 1000 276
[-] cc[] uc[] dc[] nu[]
  
```



```

VIC Cm[] 0Fpm
Encp 0 Esf[]
Slf[] Isf[] Glz[]
Mlcbk Cm[] 0V 0%
  
```



```

Ctc Cm_ 0fpm_Dz[]
ETS U_____ D_____ Ef[]
Ulz[] Ufz[] Dfz[] Dlz[]
Load 0% 0.0V
  
```






```

CPE Cm_ Mem[]
Dpp 1001 Prx[] Af1 []
Aud[] Flv[] Doe[] Dos[]
Ncu[] Sys[] Esd[] Est[]
  
```



```

DRV Cm Rdy
Flt[] Fei[] Afr[] Olf[]
Dgtm: 0 St[] Rn[]
RunT: 0.00 Ph[] Mv[]
  
```

**Note:** Press  to move cursor left and right.  
Press  to move cursor up and down.  
Press  to select.



**Car I/Os:** This sets the module that is displayed on the CPU I/O display LEDs.

```
Car Hoistway
Car Parameters
Car Status
> Car I/Os
```



```
I/O Display
> port: VIC
board:#0 SDM
type: INPUT
```



```
I/O Display
port: VIC
> board:#0 SDM
type: INPUT
```



**VIC Port**

Board    Type

- #0 SDM - INPUT
- #1 ISM - INPUT
- #2 SM1 - INPUT
- #3 SM2 - INPUT
- #4 DM - INPUT
- #5 EM1 - INPUT

- #0 CM1 - OUTPUT
- #1 CM2 - OUTPUT
- #3 SVM - OUTPUT



```
I/O Display
> port: MIC
board:#0 IRHM
type: INPUT
```



```
I/O Display
port: MIC
> board:#0 IRHM
type: INPUT
```



**MIC Port**

Board    Type

- #0 IRHM - INPUT
- #1 EM2 - INPUT



```
I/O Display
> port: MCP1
board:#0 FCS1
type: INPUT
```



```
I/O Display
port: MCP1
> board:#0 FCS1
type: INPUT
```



**MCP1 Port**

Board    Type

- #0 FCS1 - INPUT



```
I/O Display
> port: TOC
board:#0 HSM
type: INPUT
```



```
I/O Display
port: TOC
> board:#0 HSM
type: INPUT
```



**TOC Port**

Board    Type

- #0 HSM - INPUT
- #1 RLM - INPUT
- #0 DCM - OUTPUT
- #1 LCM - OUTPUT



```
I/O Display
> port: COP
board:#0 CFM
type: INPUT
```



```
I/O Display
port: COP
> board:#0 CFM
type: INPUT
```



**COP Port**

Board    Type

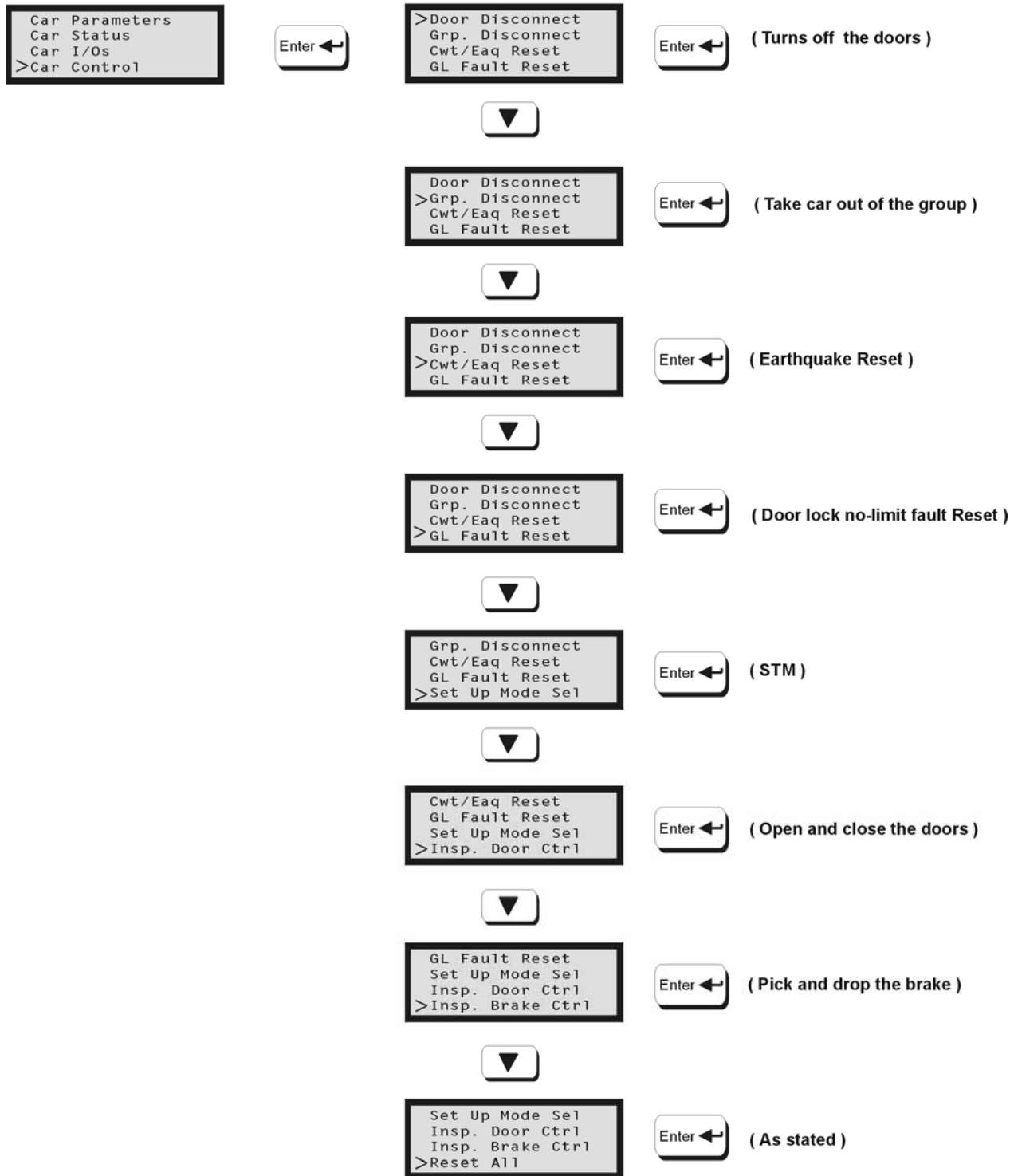
- #0 CFM - INPUT
- #3 BM - INPUT
- #4 CC1 - INPUT




**Note:** Press to move cursor left and right.  
Press to move cursor up and down.  
Press to select.



**Car Control:** The function is activated when selected.

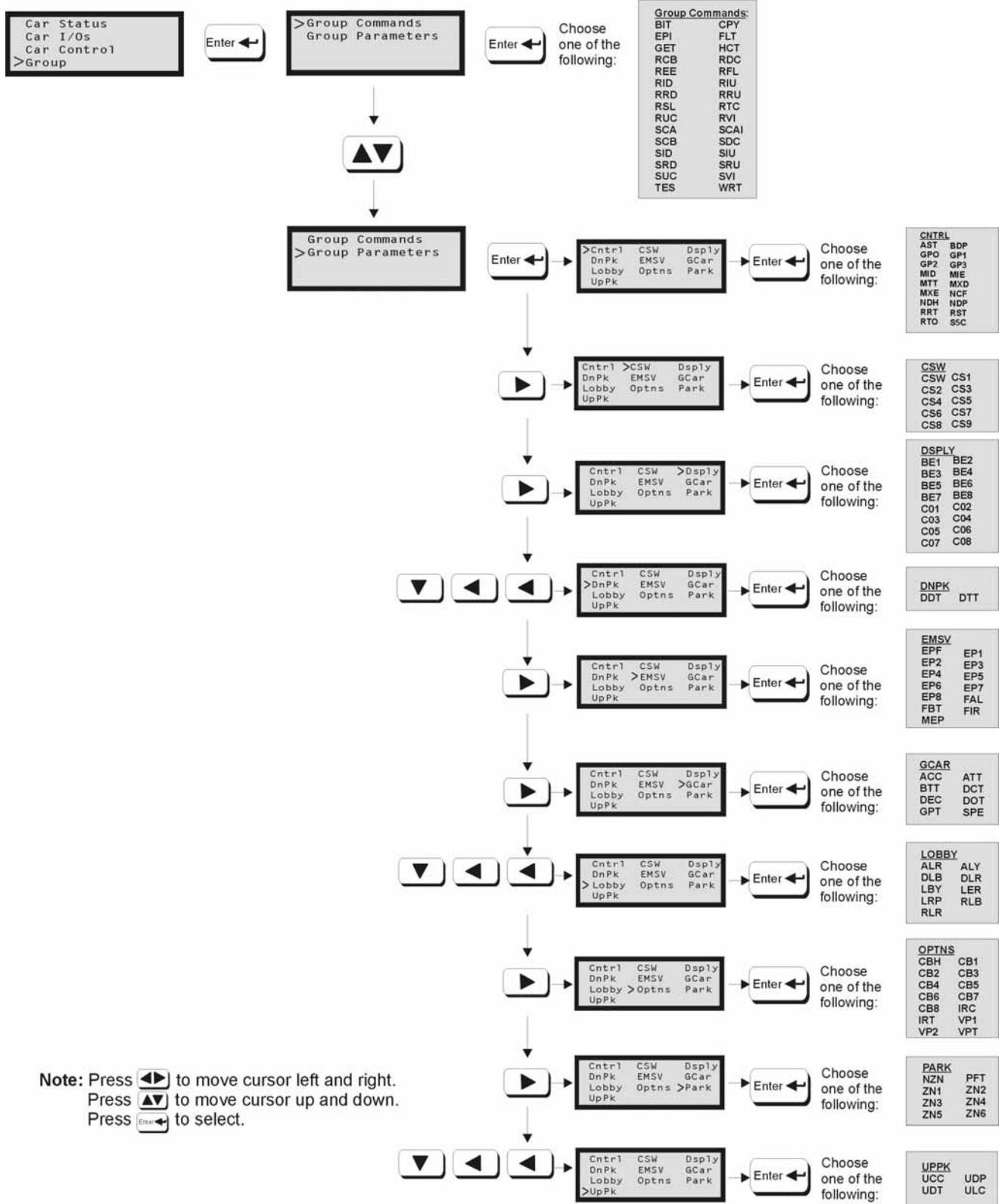
**Explanation of Function**



**Note:** Press  to move cursor left and right.  
Press  to move cursor up and down.  
Press  to select.



**Group: Data is displayed at each selection.**



**Note:** Press to move cursor left and right.  
Press to move cursor up and down.  
Press to select.

